

# Venus Double



## Datasheet

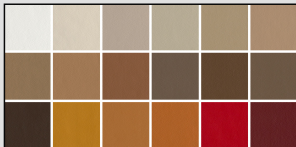
# Datasheet



**Button  
Control**



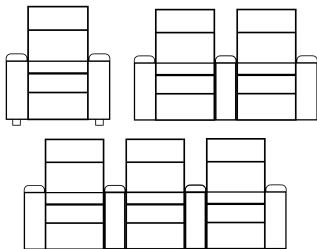
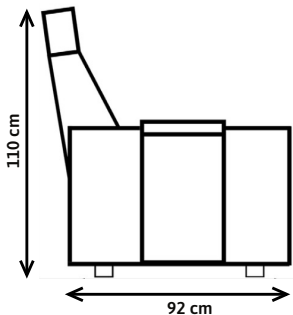
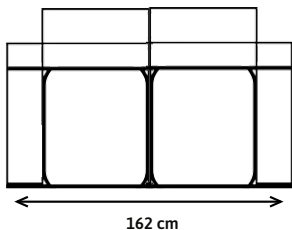
As Seatorium, we are pleased to manufacture commercial cinema & movie theater recliners for our customers who care about design and comfort. With the advantage of being a manufacturer of VIP cinema & theater seats, we can customize all our seats according to the wishes of our customers.



***Fabric : Available  
Artificial Leather : Available  
Genuine Leather : Ask us!***

Venus Dual reclines with a motorized mechanism. Only customer-specific production is made and the fabric or artificial leather you choose is covered. Please contact us for color selection. Product dimensions vary and can be narrowed and expanded according to the size of your room. The mechanism is steel and has a 250 kg load lifting capacity with 25,000 on-off test reports with 2 years warranty.





**IMPORTANT NOTE:** Our recliner models can be produced according to desired dimensions. In shared armrest seating arrangements, the total width may vary depending on the connection type of the armrests. Contact us for detailed information.





001 White

005 Ivory

042 Sand

007 Light Beige

028 Beige

027 Java



062 Desert

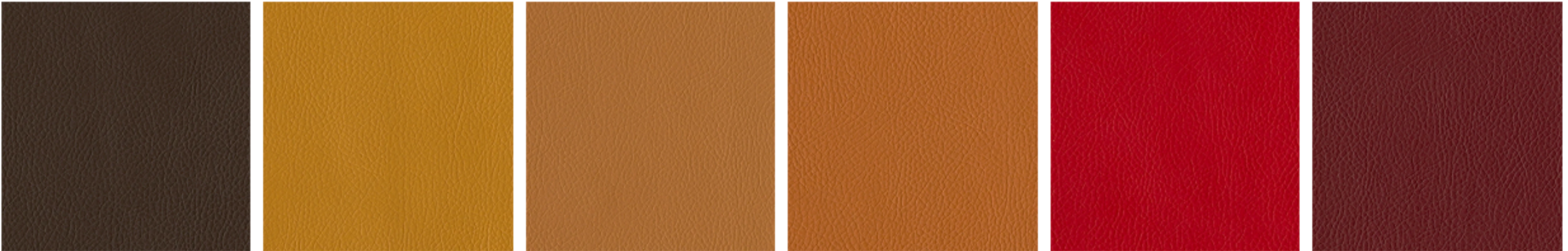
306 Caramel

317 Croquant

068 Taupe

360 Latte

310 Mocha



370 Bitter

303 Mustard

308 Camel

257 Taba

260 Red

275 Cherry



430 Army

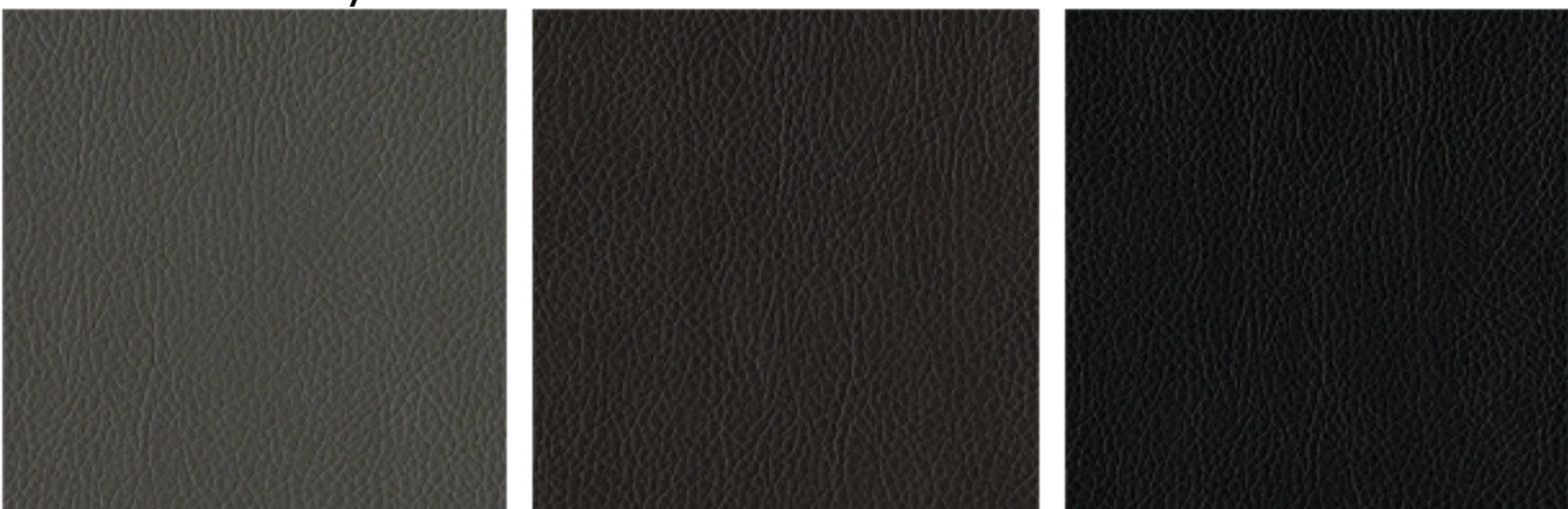
460 Grass

480 Petrol

525 Navy Blue

006 Mink

602 Pearly Grey



606 Silver Grey

625 Dark Grey

901 Black



Contact us for high quality images.

Artificial Leather Colors

Technical Details : Next Page



# GLORY

## TECHNICAL CHARACTERISTICS / TEKNİK ÖZELLİKLER

COMPOSITION/İÇERİK	BACKING/ZEMİN
VINYL / URETHANE TOP COAT VİNİL / POLİÜRETAN YÜZEY	%100 POLYESTER

TEST TYPES / TEST TİPİ	ASPECT / KRİTER	NORM	UNIT / BİRİM	STANDART TEST
WEIGHT / AĞIRLIK		550 ± 40	g / m <sup>2</sup>	ISO 2286-2
MARTINDALE - ABRASION / AŞINMA DAYANIMI		> 50.000	RUB	ISO 5470-2
TEAR STRENGHT / YIRTILMA DİRENCİ	ACROSS / EN	> 20	N	ISO 4674-1
	ALONG / BOY	> 20	N	ISO 4674-1
TENSILE STRENGHT / KOPMA DİRENCİ	ACROSS / EN	> 200	N	ISO 1421
	ALONG / BOY	> 250	N	ISO 1421
ELONGATION AT BRAEAK / KOPMA ANINDAKİ UZAMA	ACROSS / EN	210 ± 20%	%	ISO 1421
	ALONG / BOY	100 ± 20%	%	ISO 1421
COLOR FASTNESS TO RUBBING / SÜRTÜNME RENK HASLIĞI	DRY / KURU	≥ 4	GS	ISO 105-X12
	WET / ISLAK	≥ 4	GS	ISO 105-X12
LIGHT FASTNESS / IŞIK HASLIĞI	LIGHT COLORS / AÇIK RENKLER	≥ 4	BW	ISO 105-B02
	DARK COLORS / KOYU RENKLER	≥ 5	BW	ISO 105-B02



FLOKSER

FLOKSER TEKSTİL SAN. VE TİC. A.Ş.

Hadımköy Mah. Ürgüplü Cad. No:7 34555 Arnavutköy / İSTANBUL - TÜRKİYE

+90 212 866 49 00 - 1258  
+90 534 596 73 71

sales@floksertekstil.com.tr

floksertekstil.com.tr

floksertekstil

