

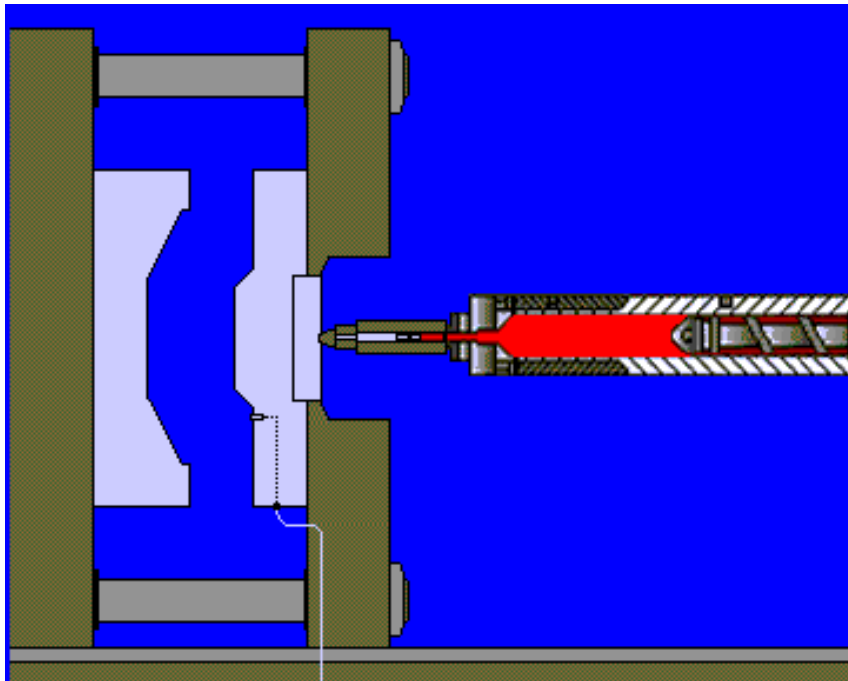
Seatorium

ROBUST

Tip Up Stadium Seat



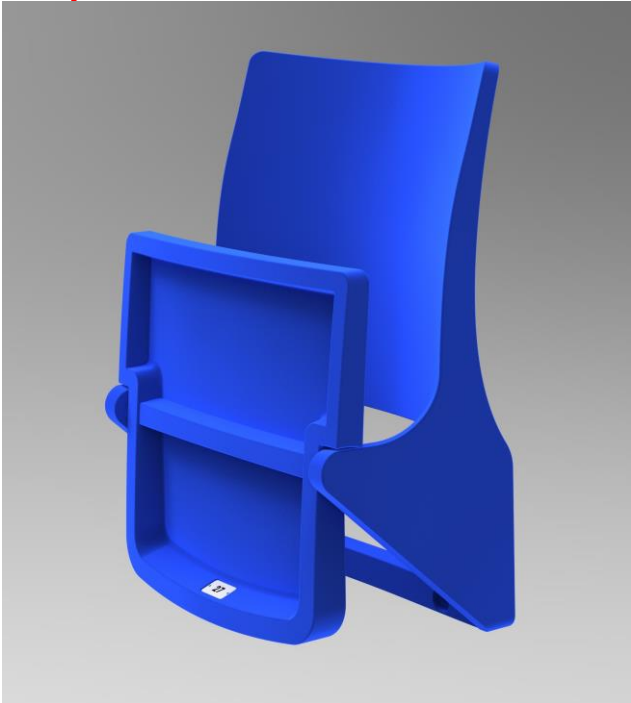
Gas injection



- *Nitrogen gas is inserted into the mold during injection.
- *Gas pushes the material to the borders with high pressure.
- *Plastic bounds with pressure and in the end you receive very durable plastic part with less weight.
- *It Allows you to produce closed shape unlike normal injection .
- *Gas injection method is popular in our Outdoor furniture branch however we are the only company using this system for stadium seating at the moment.

 Seatorium

features



ROBUST

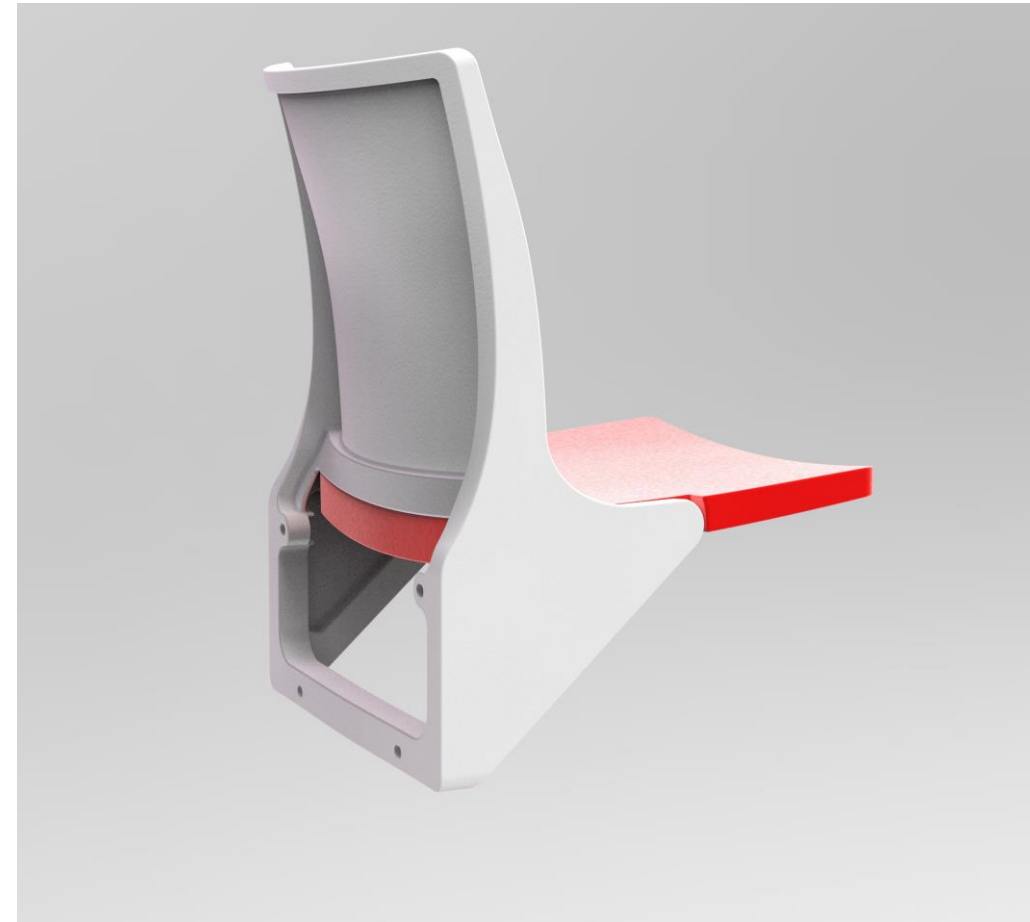
New Robust Tip Up Seats (Gas-assisted injection)

- *Seat is produced by virgin PP with gas assisted injection technology.
- *Thanks to gas assisted injection technology, seat is as strong as stone.
- *Corrosion is out of question thanks to non-metal structure. Only metal used as weight bar which is made of aluminum for folding silently with gravity (without any springs).
- *Complies with FIFA-standards.
- *Seat numbering on bottom part of the seat.
- *Perfect ergonomics and vandal-proof construction.

Seatorium

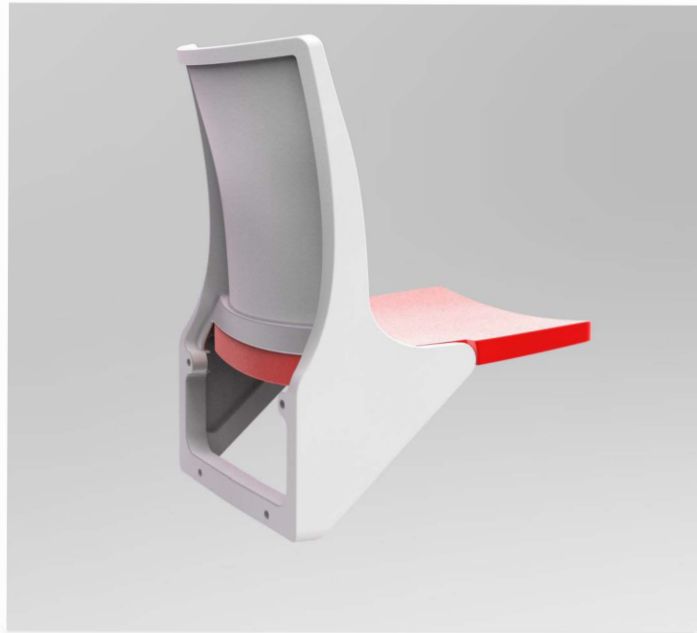
advantages

- *Immune to all weather conditions.
- *Easy to assemble on 4 points, corners in stadium is not an issue as on rail system.
- *Tip up mechanism Works with counterweight, spring failure is not an issue.
- *Gas Injection technology makes seat more durable and alot harder to break.
- *Can be mounted to the step Step mounting, gives more legroom, is better for cleaning and evacuation, also improves Access recommended by UEFA.
- *More economical compared to blow molded seats.



Seatorium

Bi color



Seatorium

Seatorium

Detailed advantages of the new ROBUST Tip-Up Seat

****ROBUST has been designed in accordance with anthropometric measurements with the support of universities and has been produced as the most ergonomic product compared to its peers.***

****Three different colors can be used in a single seat. Different colors can be used on the back of the seat, the seat and the folding rod under the seat. The additional plastic part covering the rod also contributes to the prevention of corrosion.***

****ROBUST, minimum 38 cm. height steps 45 cm. It provides an ideal viewing angle and ergonomic sitting position by being mounted barefoot at sitting height.***

****Folded Robust width is 22,50cms. When it's opened it is 57.50 cms. It provides a transition area. When evaluated in the animation made for this wide area panic scenario, it shortens the evacuation time by 65%.***

****ROBUST, 36.60 cms, which is the highest rate in folding seats. With its back height, it provides a comfortable leaning and on the other hand, it provides a 20% higher benefit as a crash barrier feature.***

****With the sandblasted pattern application made on the surface of ROBUST, the spectators were prevented from sliding forward while sitting.***

Seatorium

Detailed advantages of the new ROBUST Tip-Up Seat

****ROBUST is made of an individual, numbered, firmly fixed, robust, unbreakable, non-combustible material and has a minimum backrest height of 30 cm when measured from the seat surface.***

****All of the seats have aluminum number stickers that appear closed.***

****The seats will be mounted with steel dowels from at least 4 points.***

****Thanks to the gaseous system, which is the high pressure production technique of the seats, it is metal solid without using any metal parts. Thanks to this production technique, ROBUST is resistant to 200,000 impacts (although 40,000 impact tests are accepted). (There have been no seats broken in the marathon section of the Kalyon Stadium, which was subjected to vandalism and 400 seats were broken after it was put into service, and which was renovated with our seats produced with this technique, with a capacity of 16.000 spectators, for about 2 years.)***

****With the chemical flame retardant additive used in production, it has flame retardancy in the UL-94 V2 standard (it extinguishes in 25 seconds at the latest after being ignited), which is the highest strength in the world.***

****Produced with completely original raw materials, Robust is guaranteed for 3 years against color fading and production problems. It has been documented that it is at the "Grade 5" level, which is the highest level in color fading tests, and the equivalent of this level in the literature is "Excellent".***

Seatorium

Detailed advantages of the new ROBUST Tip-Up Seat

****With the TSE EN 13200-4 standard, which is an international norm regarding corrosion and required in our country, it is required that the metal parts be resistant to 500 hours of salt water test. With this durability, the health of the audience is protected in case of contact with metal. This standard can be achieved as a result of many processes that protect the metal from corrosion for a long time and are costly.***

****ROBUST, which is not affected by the expansion differences of metal and plastic, is much more beneficial in terms of economic life compared to its peers.***